

WATERBAY TOWER C PROGRESS REPORT

About the Project:

Project Developer	Bin Faqeeh Real Estate Investment Company W.L.L.
Title of Project	Waterbay Tower C
Project Reference	BFWBC/26/0106-3006/2021
Design & Supervision Consultant	Arab Architects
Interior Design Consultant	(East) Dar Al Décor
Main Contractor	Al Jameel Construction S.P.C.

About Progress Report:

Title of Document	Progress Report of Waterbay Tower C
Reporting Period	June 1, 2021 to June 30, 2021
Authors & project role	Al Jameel Construction S.P.C.
Date	July 11, 2021

DESCRIPTION	PERCENTAGE (%) OF COMPLETION	REMARKS
TOWER C (FRONT AND REAR PORTION)		
SUB STRUCTURE	100%	Completed
SUPER STRUCTURE		
1. Structural 1 st Floor to Roof Floor	100%	Completed
2. Structural Roof Floor	100%	Completed
3. Block Works Basement to Roof Floor	100%	Completed
4. Plastering Works Basement to Roof Floor	100%	Completed
5. Primer, Putty and 1 st Coat Paint (Ceiling)		
a. Basement 1, 2 and 3	100%	Completed
b. Ground Floor	20%	In Progress
c. 1 st Floor to 6 th Floor	95%	In Progress
d. 7 th Floor to 8 th Floor	90%	In Progress
e. 9 th Floor to 10 th Floor	5%	In Progress
f. 10 th Floor	25%	In Progress
6. Primer, Putty and 1 st Coat Paint (Wall)		
a. Basement – 2 and 3	90%	In Progress
b. Basement – 1	75%	In Progress
c. Ground Floor	18%	In Progress
d. 1 st Floor to 4 th Floor	95%	In Progress
e. 5 th Floor to 8 th Floor	90%	In Progress
f. 9 th Floor	80%	In Progress
g. 10 th Floor	40%	In Progress
7. 1 st Coat, 2 nd Coat Waterproofing & Water leakage Test – Inside Flats		
a. 1 st Floor to 7 th Floor	100%	Completed
b. 8 th Floor	98%	In Progress
c. 9 th Floor to 10 th Floor	100%	Completed
8. 1 st Coat, 2 nd Coat Waterproofing & Water leakage Test – Balcony Area		
a. 1 st Floor to 10 th Floor	76%	In Progress
b. 9 th Floor to 10 th Floor	76%	In Progress
9. MEP Services for Walls		
a. Basement – 1, 2 and 3	92%	In Progress
b. Ground Floor	92%	In Progress
c. 1 st Floor to 10 th Floor	95%	In Progress
d. Roof Floor	60%	In Progress
10. MEP Services for Ceiling		
a. Basement – 3	92%	In Progress
b. Basement – 2	92%	In Progress
c. Basement – 1	92%	In Progress
d. Ground Floor	92%	In Progress
e. 1 st Floor to 10 th Floor	95%	In Progress
f. Roof Floor	60%	In Progress



Front View

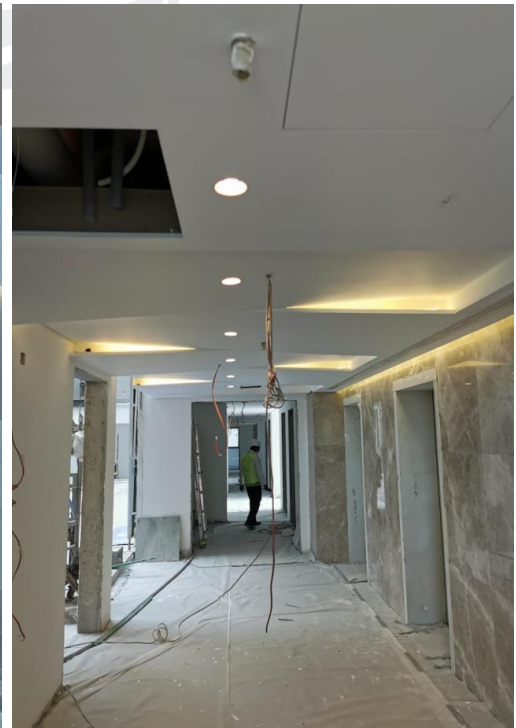
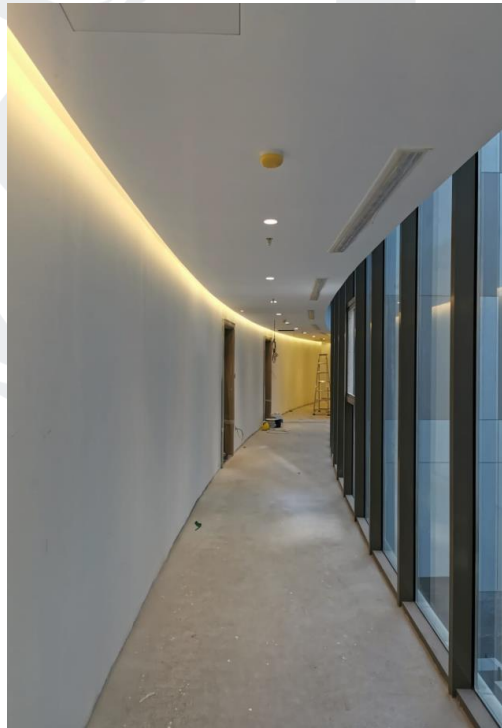


Fixing Marble Wall Cladding at Main Entrance

On-site Photos



Gypsum Ceiling and Marble Wall Cladding Works for Lift Lobby Area at Typical Floors



Gypsum Ceiling, Painting and Fixing of Lights for Corridor and Lift Lobby Area at Typical Floors



Gypsum Ceiling and Painting Works for Corridor Area at Typical Floors



Tiling Works for Bathrooms at Typical Floors