

## SOMEWHERE RESIDENCES PROGRESS REPORT

### About the Project:

<b>Project Developer</b>	Bin Faqeeh Real Estate Investment Company W.L.L.
<b>Title of Project</b>	Somewhere Residences
<b>Project Reference</b>	BFSR/19/0110-3110/2021
<b>Consultant</b>	Salah Al Kooheji Consulting Architects S.P.C.
<b>Main Contractor</b>	Al Taitoon Contracting Co. W.L.L.

### About Progress Report:

<b>Title of Document</b>	Progress Report of Somewhere Residences
<b>Reporting Period</b>	October 1, 2021 to October 31, 2021
<b>Date</b>	November 10, 2021

DESCRIPTION	PERCENTAGE (%) OF COMPLETION	REMARKS
<b>MOBILIZATION AND PRELIMINARIES</b>	50%	In Progress
<b>PILING WORKS</b>	100%	Completed
<b>EXCAVATION AND FILLING</b>	100%	Completed
<b>SUBSTRUCTURE WORKS</b>	100%	Completed
<b>SUPER STRUCTURE CONCRETE WORKS</b>		
1. Ground Floor to 42 <sup>nd</sup> Floor	100%	Completed
2. 42 <sup>nd</sup> Floor		
a. 42 <sup>nd</sup> Floor Column Work	100%	Completed
b. 42 <sup>nd</sup> Floor Shear Wall Work	100%	Completed
<b>EXTERNAL BLOCK WORK</b>		
Ground Floor	20%	In Progress
1 <sup>st</sup> Floor to 6 <sup>th</sup> Floor	90%	In Progress
7 <sup>th</sup> Floor	30%	In Progress
8 <sup>th</sup> Floor to 24 <sup>th</sup> Floor	95%	In Progress
25 <sup>th</sup> Floor	95%	In Progress
<b>INTERNAL BLOCK WORKS</b>		
Ground Floor	20%	In Progress
1 <sup>st</sup> Floor to 6 <sup>th</sup> Floor	50%	In Progress
7 <sup>th</sup> Floor	10%	In Progress
8 <sup>th</sup> Floor to 25 <sup>th</sup> Floor	95%	In Progress
26 <sup>th</sup> Floor	15%	In Progress
27 <sup>th</sup> Floor to 41 <sup>st</sup> Floor	10%	In Progress
<b>SUB STATION WORK</b>		
Sub Station work	65%	In Progress
<b>ELECTRICAL, FIRE ALARM AND ELV WORKS</b>	16%	In Progress
<b>PLUMBING WORKS</b>	16%	In Progress
<b>FIRE FIGHTING WORKS</b>	16%	In Progress

<b>SUBSTRUCTURE: 100%</b>
<b>SUPERSTRUCTURE: 93%</b>

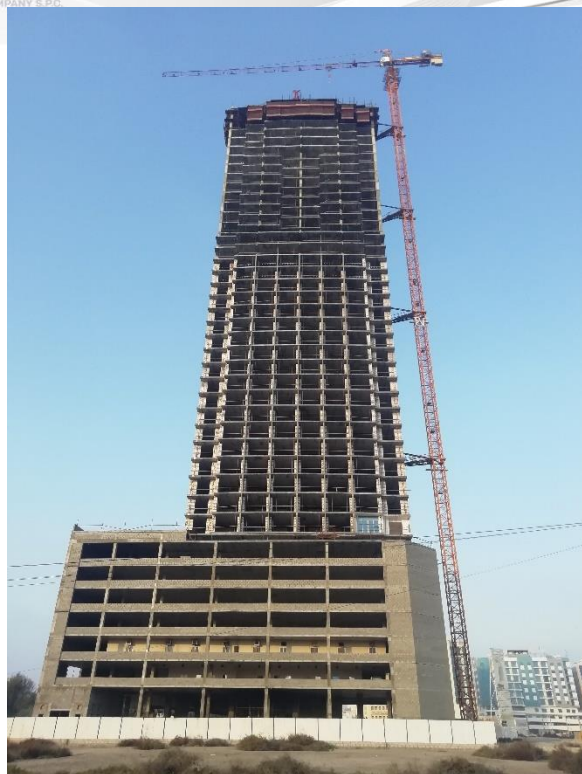


**BIN FAQEEH**

REAL ESTATE INVESTMENT  
COMPANY S.P.A.

# Somewhere

RESIDENCES



*Front Elevation*



*Rear Elevation*



*Right Side Elevation*



*Left Side Elevation*





**BIN FAQEEH**

REAL ESTATE INVESTMENT  
COMPANY S.P.C.

**Somewhere**  
RESIDENCES



*41<sup>st</sup> Floor – Concrete Work for Column*



*42<sup>nd</sup> Floor – Steel Work for Column*



*42<sup>nd</sup> Floor – Shuttering Work for Shear Wall*



*42<sup>nd</sup> Floor – Concrete Work for Shear Wall*



*41<sup>st</sup> Floor – Steel Work*



*42<sup>nd</sup> Floor – Concrete Work*