

## SOMEWHERE RESIDENCES PROGRESS REPORT

### About the Project:

<b>Project Developer</b>	Bin Faqeeh Real Estate Investment Company W.L.L.
<b>Title of Project</b>	Somewhere Residences
<b>Project Reference</b>	BFSR/30/0108-3108/2022
<b>Consultant</b>	Salah Al Kooheji Consulting Architects S.P.C.
<b>Main Contractor</b>	Al Taitoon Contracting Co. W.L.L.

### About Progress Report:

<b>Title of Document</b>	Progress Report of Somewhere Residences
<b>Reporting Period</b>	August 1, 2022 to August 31, 2022
<b>Date</b>	September 13, 2022

DESCRIPTION	PERCENTAGE (%) OF COMPLETION	REMARKS
<b>PILING WORKS</b>	100%	Completed
<b>EXCAVATION AND FILLING</b>	100%	Completed
<b>SUBSTRUCTURE WORKS</b>	100%	Completed
<b>SUPER STRUCTURE CONCRETE WORKS</b>		
Ground Floor to Top Roof	100%	Completed
<b>EXTERNAL BLOCK WORK</b>		
Ground Floor	90%	In Progress
1 <sup>st</sup> Floor to Roof Floor	100%	Completed
<b>INTERNAL BLOCK WORKS</b>		
Ground Floor	30%	In Progress
1 <sup>st</sup> Floor to Roof Floor	100%	Completed
<b>PLASTERING WORKS - INTERNAL PLASTERING</b>		
Ground Floor	30%	In Progress
1 <sup>st</sup> Floor to 6 <sup>th</sup> Floor	100%	Completed
8 <sup>th</sup> Floor to Roof Floor	100%	Completed
<b>PLASTERING WORK - EXTERNAL PLASTERING</b>		
Front Elevation	100%	Completed
Left Elevation	50%	In Progress
Right Elevation	25%	In Progress
<b>GYPSUM CEILING WORKS</b>		
8 <sup>th</sup> Floor	90%	In Progress
9 <sup>th</sup> Floor	85%	In Progress
<b>PAINTING WORKS</b>		
<b>Internal</b>		
5 <sup>th</sup> Parking Floor	70%	In Progress
8 <sup>th</sup> Floor	50%	In Progress
<b>External</b>		
Front Elevation	50%	In Progress
Left Elevation	25%	In Progress
<b>SUB STATION WORK</b>		
Sub Station Work	90%	In Progress

<b>SUBSTRUCTURE: 100%</b>
<b>SUPERSTRUCTURE: 99.5%</b>



BIN FAQEEH

REAL ESTATE INVESTMENT  
COMPANY S.P.A.

# Somewhere

RESIDENCES



*Front Elevation*



*Rear Elevation*

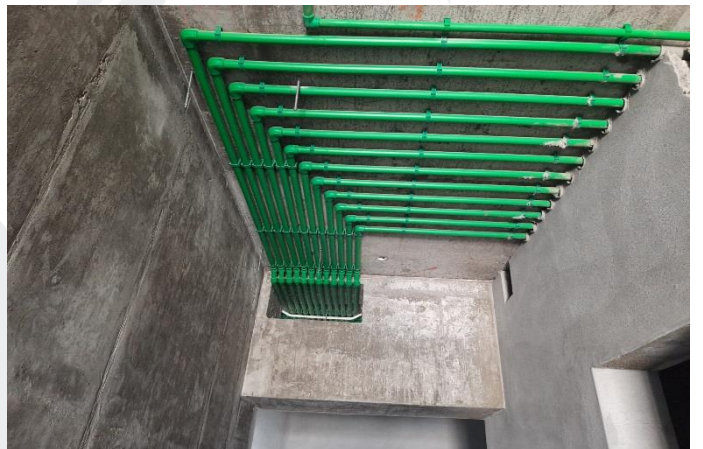


*Right Side Elevation*



*Left Side Elevation*





MEP Works



Block Works



*Plastering Works*



*Gypsum and Painting Works*