

WATERBAY TOWER A PROGRESS REPORT

About the Project:

Project Developer	Bin Faqeeh Real Estate Investment Company S.P.C.
Title of Project	Waterbay Tower A
Project Reference	BFWBA/08/0112-3112/2019
Design & Supervision Consultant	Arab Architects
Interior Design Consultant	(West) Roar
Main Contractor	Al Jameel Construction S.P.C.

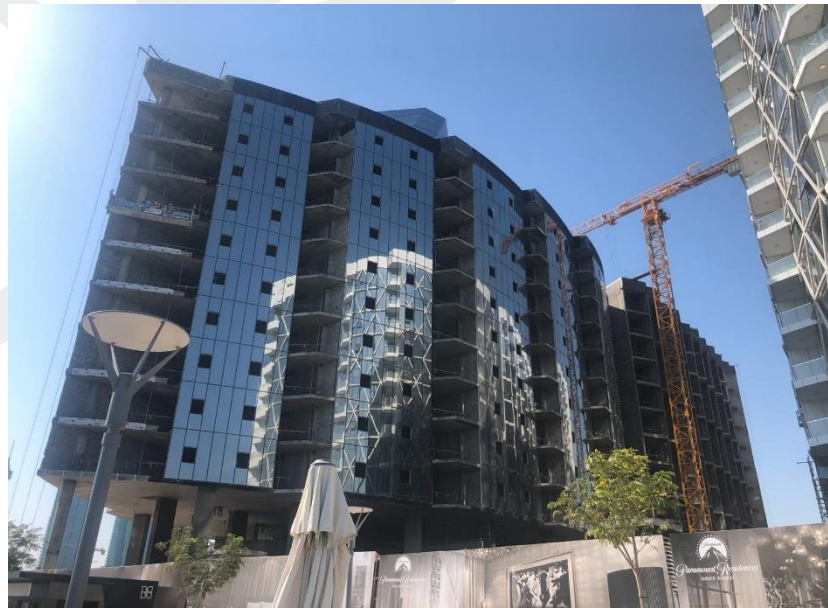
About Progress Report:

Title of Document	Progress Report of Waterbay Tower A
Reporting Period	December 1, 2019 to December 31, 2019
Authors & project role	Al Jameel Construction S.P.C.
Date	January 5, 2019

DESCRIPTION	PERCENTAGE (%) OF COMPLETION	REMARKS
TOWER A (FRONT AND REAR PORTIONS)		
SUB STRUCTURE	100%	Completed
SUPER STRUCTURE		
1. Structural 1 st and 10 th Floors	100%	Completed
2. Structural Roof Floor	100%	Completed
3. Block Works		
a. Basement - 1,2 and 3	100%	Completed
b. Ground Floor	30%	In Progress
c. 1 st Floor	95%	In Progress
d. 2 nd Floor	95%	In Progress
e. 3 rd Floor	95%	In Progress
f. 4 th Floor	95%	In Progress
g. 5 th Floor	95%	In Progress
h. 6 th Floor	90%	In Progress
i. 7 th Floor	90%	In Progress
j. 8 th Floor	90%	In Progress
k. 9 th Floor	90%	In Progress
a. 10 th Floor	90%	In Progress
b. Roof Floor	95%	In Progress
4. Plastering Works		
a. Basement - 1, 2 and 3	100%	Completed
b. Ground Floor	5%	In Progress
c. 1 st Floor	40%	In Progress
d. 2 nd Floor	40%	In Progress
5. Primer, Putty and 1 st Coat Paint (Ceiling)		
a. Basement - 1, 2 and 3	100%	Completed
b. Ground Floor	10%	In Progress
6. Primer, Putty and 1 st Coat Paint (Wall)		
a. Basement - 1, 2 and 3	60%	In Progress
b. Ground Floor	10%	In Progress
7. MEP Services for Walls		
a. Basement - 2 and 3	43%	In Progress
b. Basement - 1	37%	In Progress
c. Ground Floor	5%	In Progress
d. 1 st Floor	19%	In Progress
e. 2 nd Floor to 4 th Floor	16%	In Progress
f. 5 th Floor to 6 th Floor	15%	In Progress
g. 7 th Floor to 8 th Floor	11%	In Progress
h. 9 th Floor	10%	In Progress
i. 10 th Floor	12%	In Progress
j. Roof Floor	2%	In Progress

8. MEP Services for Ceiling		
a. Basement - 2 and 3	43%	In Progress
b. Basement - 1	37%	In Progress
c. Ground Floor	5%	In Progress
d. 1 st Floor	19%	In Progress
e. 2 nd Floor	16%	In Progress
f. 3 rd Floor	16%	In Progress
g. 4 th Floor	16%	In Progress
h. 5 th Floor	15%	In Progress
i. 6 th Floor to 8 th Floor	11%	In Progress
j. 9 th Floor	10%	In Progress
k. 10 th Floor	12%	In Progress
l. Roof Floor	2%	In Progress

On-site photos:



Installation of Aluminum Works (Brackets, Mullion, Rockwool, ACP Cladding and Glass)

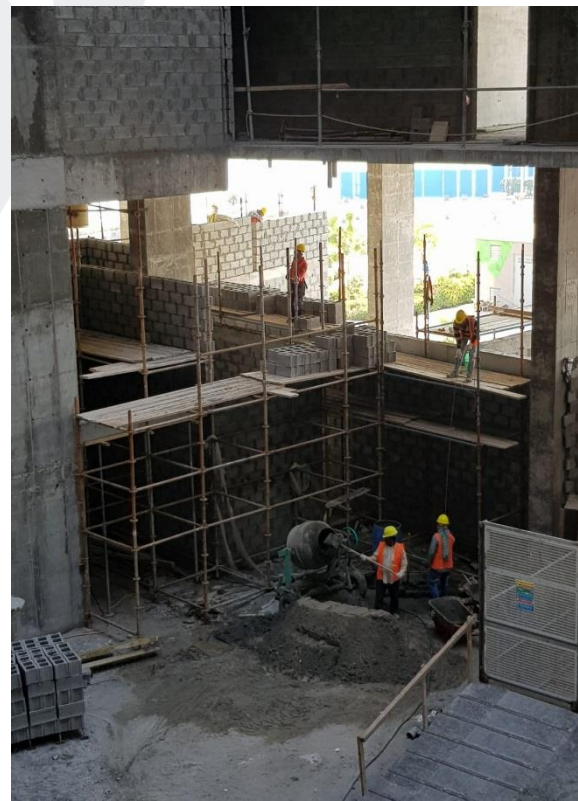
Zone A and A1



Swimming Pool Layout



Plastering Works at Typical Floors



Block Works Layout at Ground Floor