

SOMEWHERE RESIDENCES PROGRESS REPORT

About the Project:

| | |
|--------------------------|--|
| Project Developer | Bin Faqeeh Real Estate Investment Company S.P.C. |
| Title of Project | Somewhere Residences |
| Project Reference | BFSR/04/0107-3107/2020 |
| Consultant | Salah Al Kooheji Consulting Architects SPC |
| Main Contractor | Al Taitoon Contracting Co. WLL |

About Progress Report:

| | |
|--------------------------|---|
| Title of Document | Progress Report of Somewhere Residences |
| Reporting Period | July 1, 2020 to July 31, 2020 |
| Date | August 16, 2020 |



BIN FAQEEH
REAL ESTATE INVESTMENT
COMPANY S.P.C.



| DESCRIPTION | PERCENTAGE (%) OF COMPLETION | REMARKS |
|---------------------------------------|------------------------------|-------------|
| MOBILIZATION AND PRELIMINARIES | 50% | In Progress |
| PILING WORKS | 100% | Completed |
| EXCAVATION AND FILLING | 100% | Completed |
| SUBSTRUCTURE WORKS | 100% | Completed |
| SUPER STRUCTURE | | |
| 1. Ground Floor | | |
| a. Columns and Lift wall | 100% | Completed |
| 2. First Floor | | |
| a. First Floor Slab | 100% | Completed |
| b. Columns and Core wall | 100% | Completed |
| 3. Second Floor | | |
| a. Second Floor Slab | 100% | Completed |
| b. Columns and Core wall | 100% | Completed |
| 4. Third Floor | | |
| a. Third Floor Slab | 100% | Completed |
| b. Columns and Core wall | 100% | Completed |
| 5. Fourth Floor | | |
| a. Fourth Floor Slab | 100% | Completed |
| b. Columns and Core wall | 100% | Completed |
| 6. Fifth Floor | | |
| a. Fifth Floor Slab | 100% | Completed |
| b. Columns and Core wall | 100% | Completed |
| 7. Sixth Floor | | |
| a. Sixth Floor Slab | 100% | Completed |
| b. Columns and Core wall | 100% | Completed |
| 8. Seventh Floor | | |
| a. Seventh Floor Slab | 100% | Completed |
| b. Pool deck Slab | 100% | Completed |
| c. Columns and Core wall | 100% | Completed |
| 9. Eight Floor | | |
| a. Eight Floor Slab | 100% | Completed |
| b. Columns and Core wall | 100% | Completed |
| 10. Ninth Floor | | |
| a. Ninth Floor Slab | 100% | Completed |
| b. Columns and Shear wall | 100% | Completed |
| 11. Tenth Floor | | |
| a. Tenth Floor Slab | 100% | Completed |
| b. Columns and Shear wall | 100% | Completed |

| | | |
|---|------|-------------|
| 12. Eleventh Floor | | |
| a. Eleventh Floor Slab | 100% | Completed |
| b. Columns and Shear wall | 100% | Completed |
| 13. Twelveth Floor | | |
| a. Twelveth Floor Slab | 100% | Completed |
| b. Columns and Shear wall | 100% | Completed |
| 14. Thirteenth Floor | | |
| a. Thirteenth Floor Slab | 100% | Completed |
| b. Columns and Shear wall | | |
| EXTERNAL BLOCK WORK | | |
| Ground Floor | 20% | In Progress |
| First Floor to Fifth Floor | 90% | In Progress |
| Sixth Floor | 80% | In Progress |
| Seventh Floor | 30% | In Progress |
| Eight Floor | 90% | In Progress |
| INTERNAL BLOCK WORKS | | |
| Ground Floor | 20% | In Progress |
| First Floor to Sixth Floor | 50% | In Progress |
| Seventh Floor | 10% | In Progress |
| Eight Floor | 70% | In Progress |
| Ninth Floor | 10% | In Progress |
| Tenth Floor | 10% | In Progress |
| Eleventh Floor | 10% | In Progress |
| SUB STATION WORK | | |
| Sub Station work | 60% | In Progress |
| ELECTRICAL, FIRE ALARM AND ELV WORKS | | |
| | 15% | In Progress |
| PLUMBING WORKS | | |
| | 15% | In Progress |
| FIRE FIGHTING WORKS | | |
| | 15% | In Progress |

| |
|----------------------------|
| SUBSTRUCTURE: 100% |
| SUPERSTRUCTURE: 42% |



BIN FAQEEH
REAL ESTATE INVESTMENT
COMPANY S.P.C.

Somewhere

RESIDENCES



Front View



Left View



Right View



Rear View



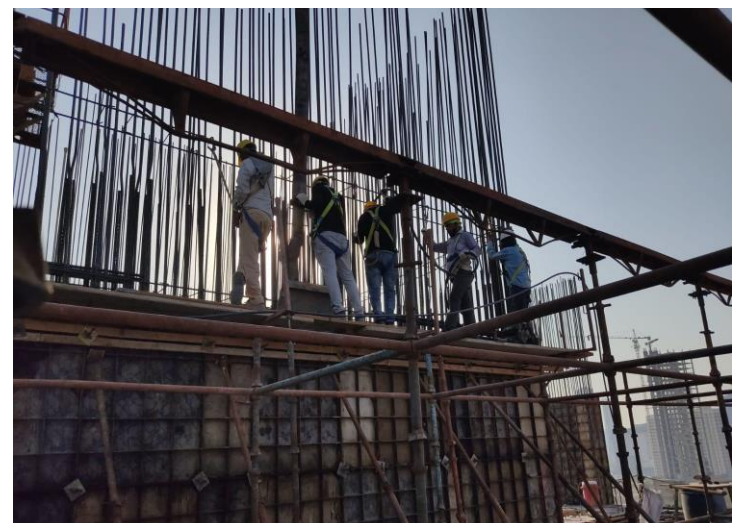
6th Floor Car Parking Block Work



11th Floor – Slab Reinforcement Work



12th Floor Column Form Work



12th Floor Shear Wall Concrete



BIN FAQEEH

REAL ESTATE INVESTMENT
COMPANY S.P.C.

Somewhere
RESIDENCES



13th Floor – Slab Reinforcement Works



11th Floor – Shear Wall Concrete Work