

## WATERBAY TOWER C PROGRESS REPORT

### About the Project:

|  |  |
|--|--|
| <b>Project Developer</b>                   | Bin Faqeeh Real Estate Investment Company W.L.L. |
| <b>Title of Project</b>                    | Waterbay Tower C                                 |
| <b>Project Reference</b>                   | BFWBC/24/0104-3004/2021                          |
| <b>Design &amp; Supervision Consultant</b> | Arab Architects                                  |
| <b>Interior Design Consultant</b>          | (East) Dar Al Décor                              |
| <b>Main Contractor</b>                     | Al Jameel Construction S.P.C.                    |

### About Progress Report:

|                                   |                                     |
|-----------------------------------|-------------------------------------|
| <b>Title of Document</b>          | Progress Report of Waterbay Tower C |
| <b>Reporting Period</b>           | April 1, 2021 to April 30, 2021     |
| <b>Authors &amp; project role</b> | Al Jameel Construction S.P.C.       |
| <b>Date</b>                       | May 5, 2021                         |

| DESCRIPTION   | PERCENTAGE (%) OF COMPLETION | REMARKS     |
|---|------------------------------|-------------|
| <b>TOWER C (FRONT AND REAR PORTION)</b>   |                              |             |
| <b>SUB STRUCTURE</b>  | 100%                         | Completed   |
| <b>SUPER STRUCTURE</b>  |                              |             |
| 1. Structural 1 <sup>st</sup> Floor to Roof Floor   | 100%                         | Completed   |
| 2. Structural Roof Floor  | 100%                         | Completed   |
| 3. Block Works  |                              |             |
| a. Basement 1, 2 and 3  | 100%                         | Completed   |
| b. Ground Floor   | 100%                         | Completed   |
| c. 1 <sup>st</sup> Floor to 9 <sup>th</sup> Floor   | 100%                         | Completed   |
| d. 10 <sup>th</sup> Floor1  | 100%                         | Completed   |
| e. Roof Floor   | 100%                         | Completed   |
| 4. Plastering Works   |                              |             |
| a. Basement 1, 2 and3   | 100%                         | Completed   |
| b. Ground Floor   | 90%                          | In Progress |
| c. 1 <sup>st</sup> Floor to 8 <sup>th</sup> Floor   | 100%                         | Completed   |
| d. 9 <sup>th</sup> Floor  | 100%                         | Completed   |
| e. 10 <sup>th</sup> Floor   | 100%                         | Completed   |
| f. Roof Floor   | 100%                         | Completed   |
| 5. Primer, Putty and 1 <sup>st</sup> Coat Paint (Ceiling)                                       |                              |             |
| a. Basement 1, 2 and 3  | 100%                         | Completed   |
| b. Ground Floor   | 20%                          | In Progress |
| c. 1 <sup>st</sup> Floor to 8 <sup>th</sup> Floor   | 90%                          | In Progress |
| d. 9 <sup>th</sup> Floor to 10 <sup>th</sup> Floor  | 25%                          | In Progress |
| 6. Primer, Putty and 1 <sup>st</sup> Coat Paint (Wall)  |                              |             |
| a. Basement - 3   | 80%                          | In Progress |
| b. Basement - 2   | 75%                          | In Progress |
| c. Basement - 1   | 65%                          | In Progress |
| d. Ground Floor   | 18%                          | In Progress |
| e. 1 <sup>st</sup> Floor to 8 <sup>th</sup> Floor   | 90%                          | In Progress |
| f. 9 <sup>th</sup> to 10 <sup>th</sup> Floor  | 40%                          | In Progress |
| 7. 1 <sup>st</sup> Coat, 2 <sup>nd</sup> Coat Waterproofing & Water leakage Test – Inside Flats |                              |             |
| a. 1 <sup>st</sup> Floor to 7 <sup>th</sup> Floor   | 100%                         | Completed   |
| b. 8 <sup>th</sup> Floor  | 98%                          | In Progress |
| c. 9 <sup>th</sup> Floor to 10 <sup>th</sup> Floor  | 100%                         | Completed   |
| 8. 1 <sup>st</sup> Coat, 2 <sup>nd</sup> Coat Waterproofing & Water leakage Test – Balcony Area |                              |             |
| a. 1 <sup>st</sup> Floor to 7 <sup>th</sup> Floor   | 76%                          | In Progress |
| b. 9 <sup>th</sup> Floor to 10 <sup>th</sup> Floor  | 76%                          | In Progress |
| 9. MEP Services for Walls   |                              |             |
| a. Basement - 3   | 83%                          | In Progress |
| b. Basement - 2   | 89%                          | In Progress |
| c. Basement - 1   | 87%                          | In Progress |
| d. Ground Floor   | 80%                          | In Progress |
| e. 1 <sup>st</sup> Floor to 4 <sup>th</sup> Floor   | 92%                          | In Progress |

|  |     |             |
|--|-----|-------------|
| f. 5 <sup>th</sup> Floor                           | 91% | In Progress |
| g. 6 <sup>th</sup> Floor                           | 90% | In Progress |
| h. 7 <sup>th</sup> Floor – 10 <sup>th</sup> Floor  | 89% | In Progress |
| i. Roof Floor                                      | 54% | In Progress |
| <b>10. MEP Services for Ceiling</b>                |     |             |
| a. Basement – 3                                    | 83% | In Progress |
| b. Basement – 2                                    | 89% | In Progress |
| c. Basement – 1                                    | 87% | In Progress |
| d. Ground Floor                                    | 80% | In Progress |
| e. 1 <sup>st</sup> Floor to 4 <sup>th</sup> Floor  | 92% | In Progress |
| f. 5 <sup>th</sup> Floor                           | 91% | In Progress |
| g. 6 <sup>th</sup> Floor                           | 90% | In Progress |
| h. 7 <sup>th</sup> Floor to 10 <sup>th</sup> Floor | 89% | In Progress |
| i. Roof Floor                                      | 54% | In Progress |

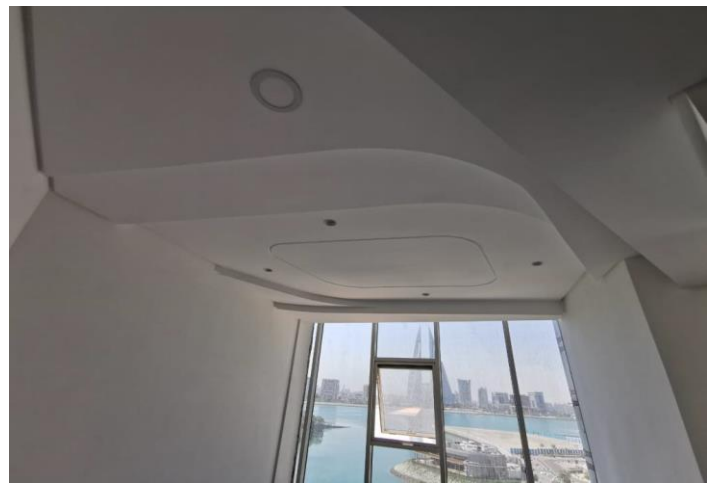


*Installation of Aluminum Works (Brackets, Mullion, Rockwool ACP Cladding & Glass and Application of Bitumen Paint)*

*On-site Photos:*



*Installation of Kitchen and Painting Works at Typical Floors*



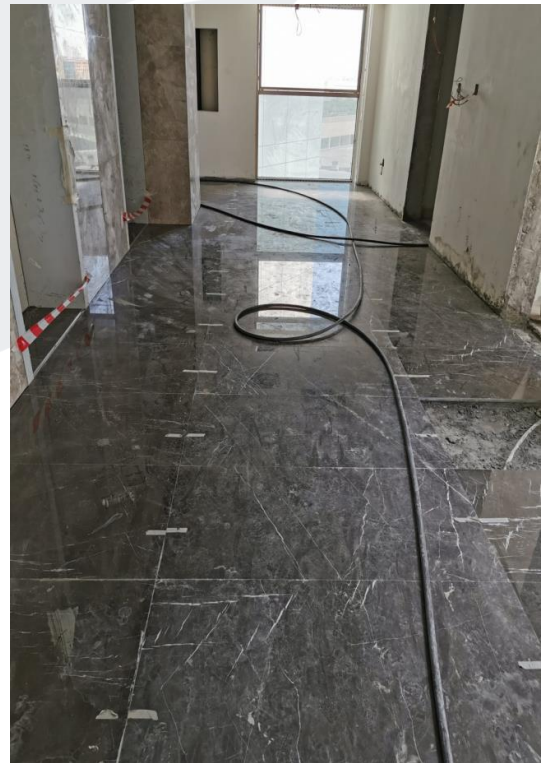
*Painting Works at Typical Floors*



*Gypsum Ceiling Works at Typical Floors*



*Tile Works for Toilet Area  
at Typical Floors*



*Marble Works for Lift Lobby Area  
at Typical Floors*



*Marble Wall Cladding Works for Lift Lobby Area at Typical Floors*



*Waterproofing Works at Roof Floor*



*Installation of MEP Services at Typical Floors*