

## WATERBAY TOWER A PROGRESS REPORT

### About the Project:

<b>Project Developer</b>	Bin Faqeeh Real Estate Investment Company S.P.C.
<b>Title of Project</b>	Waterbay Tower A
<b>Project Reference</b>	BFWBA/18/0109-3109/2020
<b>Design &amp; Supervision Consultant</b>	Arab Architects
<b>Interior Design Consultant</b>	(West) Roar
<b>Main Contractor</b>	Al Jameel Construction S.P.C.

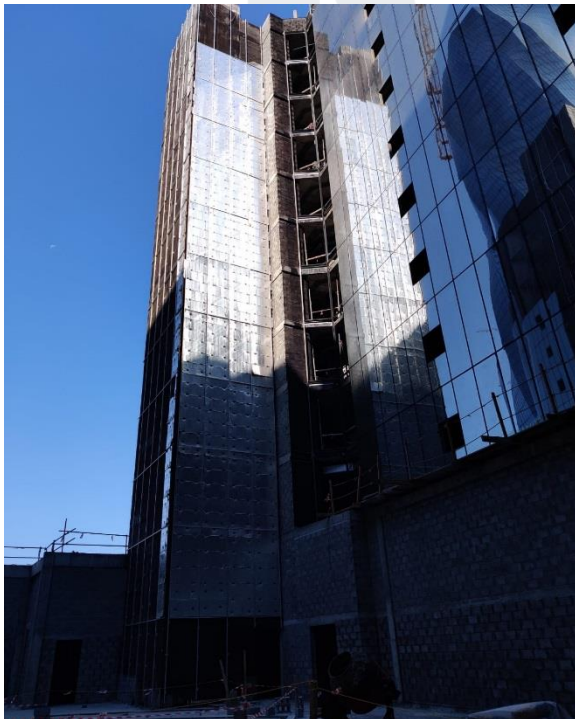
### About Progress Report:

<b>Title of Document</b>	Progress Report of Waterbay Tower A
<b>Reporting Period</b>	October 1, 2020 to October 31, 2020
<b>Authors &amp; project role</b>	Al Jameel Construction S.P.C.
<b>Date</b>	November 9, 2020

DESCRIPTION	PERCENTAGE (%) OF COMPLETION	REMARKS
<b>TOWER A (FRONT AND REAR PORTIONS)</b>		
<b>SUB STRUCTURE</b>	100%	Completed
<b>SUPER STRUCTURE</b>		
1. Structural 1 <sup>st</sup> and 10 <sup>th</sup> Floors	100%	Completed
2. Structural Roof Floor	100%	Completed
3. Block Works		
a. Basement - 1,2 and 3	100%	Completed
b. Ground Floor	85%	In Progress
c. 1 <sup>st</sup> Floor	95%	In Progress
d. 2 <sup>nd</sup> Floor	95%	In Progress
e. 3 <sup>rd</sup> Floor	95%	In Progress
f. 4 <sup>th</sup> Floor	95%	In Progress
g. 5 <sup>th</sup> Floor	95%	In Progress
h. 6 <sup>th</sup> Floor to 10 <sup>th</sup> Floor	98%	In Progress
a. Roof Floor	95%	In Progress
4. Plastering Works		
a. Basement - 1, 2 and 3	100%	Completed
b. Ground Floor	5%	In Progress
c. 1 <sup>st</sup> Floor to 8 <sup>th</sup> Floor	85%	In Progress
d. 9 <sup>th</sup> Floor	80%	In Progress
e. 9 <sup>th</sup> Floor to 10 <sup>th</sup> Floor	60%	In Progress
5. Primer, Putty and 1 <sup>st</sup> Coat Paint (Ceiling)		
a. Basement - 1, 2 and 3	100%	Completed
b. Ground Floor	10%	In Progress
6. Primer, Putty and 1 <sup>st</sup> Coat Paint (Wall)		
a. Basement - 1, 2 and 3	60%	In Progress
b. Ground Floor	10%	In Progress
7. MEP Services for Walls		
a. Basement - 2 and 3	48%	In Progress
b. Basement - 1	43%	
c. Ground Floor	10%	In Progress
d. 1 <sup>st</sup> Floor	59%	In Progress
e. 2 <sup>nd</sup> Floor	54%	In Progress
f. 3 <sup>rd</sup> Floor	51%	In Progress
g. 4 <sup>th</sup> Floor	45%	In Progress
h. 5 <sup>th</sup> Floor	45%	In Progress
i. 6 <sup>th</sup> Floor	45%	In Progress
j. 7 <sup>th</sup> Floor	44%	In Progress
k. 8 <sup>th</sup> Floor	41%	In Progress

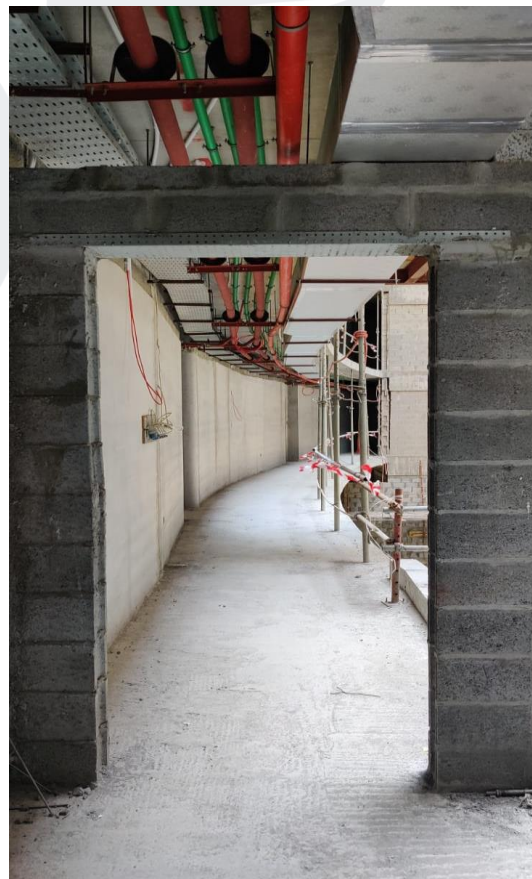
l. 9 <sup>th</sup> Floor	30%	In Progress
m. 10 <sup>th</sup> Floor	26%	In Progress
n. Roof Floor	2%	In Progress
<b>8. MEP Services for Ceiling</b>		
a. Basement – 2 and 3	48%	In Progress
b. Basement – 1	43%	In Progress
c. Ground Floor	10%	In Progress
d. 1 <sup>st</sup> Floor	59%	In Progress
e. 2 <sup>nd</sup> Floor	54%	In Progress
f. 3 <sup>rd</sup> Floor	53%	In Progress
g. 4 <sup>th</sup> Floor	51%	In Progress
h. 5 <sup>th</sup> Floor	45%	In Progress
i. 6 <sup>th</sup> Floor	45%	In Progress
j. 7 <sup>th</sup> Floor	44%	In Progress
k. 8 <sup>th</sup> Floor	41%	In Progress
l. 9 <sup>th</sup> Floor	30%	In Progress
m. 10 <sup>th</sup> Floor	26%	In Progress
n. Roof Floor	2%	In Progress

*On-site photos:*



*Installation of Aluminum Works (Brackets, Mullion, Rockwool, ACP Cladding and Glass and Application of Bitumen Paint)*





*Installation of MEP Services at Typical Floors*