

## WATERBAY TOWER C PROGRESS REPORT

### About the Project:

<b>Project Developer</b>	Bin Faqeeh Real Estate Investment Company S.P.C.
<b>Title of Project</b>	Waterbay Tower C
<b>Project Reference</b>	BFWBC/20/0112-3112/2020
<b>Design &amp; Supervision Consultant</b>	Arab Architects
<b>Interior Design Consultant</b>	(East) Dar Al Décor
<b>Main Contractor</b>	Al Jameel Construction S.P.C.

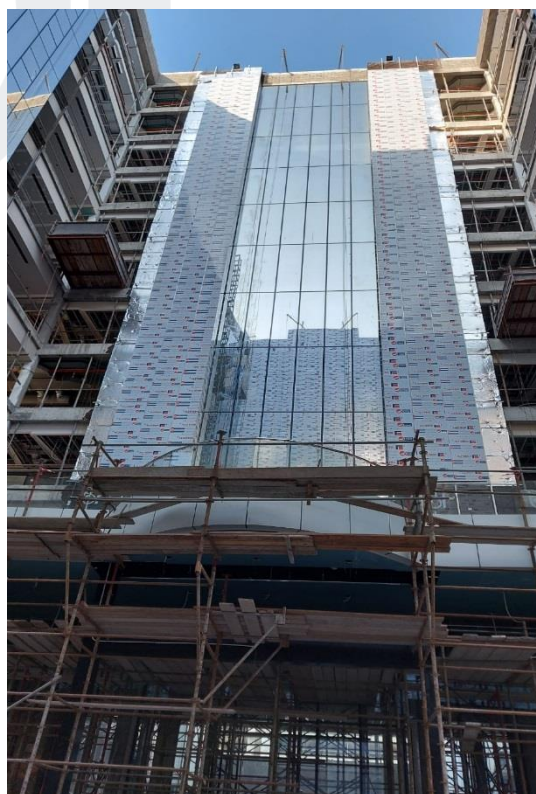
### About Progress Report:

<b>Title of Document</b>	Progress Report of Waterbay Tower C
<b>Reporting Period</b>	December 1, 2020 to December 31, 2020
<b>Authors &amp; project role</b>	Al Jameel Construction S.P.C.
<b>Date</b>	January 5, 2021

DESCRIPTION	PERCENTAGE (%) OF COMPLETION	REMARKS
<b>TOWER C (FRONT AND REAR PORTION)</b>		
<b>SUB STRUCTURE</b>	100%	Completed
<b>SUPER STRUCTURE</b>		
1. Structural 1 <sup>st</sup> Floor to Roof Floor	100%	Completed
2. Structural Roof Floor	100%	Completed
3. Block Works		
a. Basement 1, 2 and 3	100%	Completed
b. Ground Floor	97%	In Progress
c. 1 <sup>st</sup> Floor to 9 <sup>th</sup> Floor	100%	Completed
d. 10 <sup>th</sup> Floor	95%	In Progress
e. Roof Floor	95%	In Progress
4. Plastering Works		
a. Basement 1, 2 and 3	100%	Completed
b. Ground Floor	50%	In Progress
c. 1 <sup>st</sup> Floor to 8 <sup>th</sup> Floor	100%	Completed
d. 9 <sup>th</sup> Floor	98%	In Progress
e. 10 <sup>th</sup> Floor	90%	In Progress
f. Roof Floor	95%	In Progress
5. Primer, Putty and 1 <sup>st</sup> Coat Paint (Ceiling)		
a. Basement 1, 2 and 3	100%	Completed
b. Ground Floor	5%	In Progress
c. 1 <sup>st</sup> Floor to 2 <sup>nd</sup> Floor	90%	In Progress
d. 3 <sup>rd</sup> Floor	80%	In Progress
e. 4 <sup>th</sup> Floor to 5 <sup>th</sup> Floor	90%	In Progress
f. 6 <sup>th</sup> Floor to 7 <sup>th</sup> Floor	50%	In Progress
g. 8 <sup>th</sup> Floor to 10 <sup>th</sup> Floor	20%	In Progress
6. Primer, Putty and 1 <sup>st</sup> Coat Paint (Wall)		
a. Basement – 1, 2 and 3	60%	In Progress
b. Ground Floor	18%	In Progress
c. 1 <sup>st</sup> Floor to 5 <sup>th</sup> Floor	90%	In Progress
d. 6 <sup>th</sup> Floor to 7 <sup>th</sup> Floor	80%	In Progress
e. 8 <sup>th</sup> Floor	50%	In Progress
f. 9 <sup>th</sup> Floor to 10 <sup>th</sup> Floor	40%	In Progress
7. MEP Services for Walls		
a. Basement – 3	73%	In Progress
b. Basement – 2	74%	In Progress
c. Basement – 1	73%	In Progress
d. Ground Floor	63%	In Progress
e. 1 <sup>st</sup> Floor	91%	In Progress
f. 2 <sup>nd</sup> Floor	91%	In Progress
g. 3 <sup>rd</sup> Floor	89%	In Progress
h. 4 <sup>th</sup> Floor	91%	In Progress
i. 5 <sup>th</sup> Floor	88%	In Progress

j. 6 <sup>th</sup> Floor	87%	In Progress
k. 7 <sup>th</sup> Floor	86%	In Progress
l. 8 <sup>th</sup> Floor	86%	In Progress
m. 9 <sup>th</sup> Floor	79%	In Progress
n. 10 <sup>th</sup> Floor	76%	In Progress
o. Roof Floor	98%	In Progress
<b>8. MEP Services for Ceiling</b>		
a. Basement – 3	73%	In Progress
b. Basement – 2	74%	In Progress
c. Basement – 1	73%	In Progress
d. Ground Floor	63%	In Progress
e. 1 <sup>st</sup> Floor	91%	In Progress
f. 2 <sup>nd</sup> Floor	91%	In Progress
g. 3 <sup>rd</sup> Floor to 7 <sup>th</sup> Floor	89%	In Progress
h. 8 <sup>th</sup> Floor	86%	In Progress
i. 9 <sup>th</sup> Floor	79%	In Progress
j. 10 <sup>th</sup> Floor	76%	In Progress
k. Roof Floor	48%	In Progress

*On-site Photos:*



*Installation of Aluminum Works (Brackets, Mullion, Rockwool ACP Cladding & Glass and Application of Bitumen Paint)*





*Gypsum Ceiling and Painting Works at Typical Floors*



*Gypsum Ceiling and Painting Works at Corridor Area (Typical Floor)*



*Water Leakage Test at Typical Floors*



*Waterproofing Works & Water Leakage Test for Terrace Area at 1<sup>st</sup> Floor*





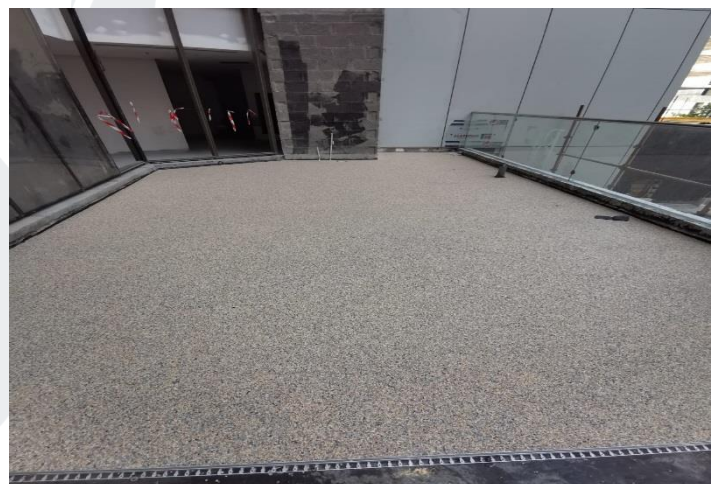
*Waterproofing works for Balcony Area*



*Water proofing works at Typical Floors*



*Fixing of Tiles for Toilet Area at Typical Floors*



*Terrace Area at 1<sup>st</sup> Floor*



*Plastering works at Ground Floor*



*Service Area at Basement*