

## SOMEWHERE RESIDENCES PROGRESS REPORT

### About the Project:

<b>Project Developer</b>	Bin Faqeeh Real Estate Investment Company S.P.C.
<b>Title of Project</b>	Somewhere Residences
<b>Project Reference</b>	BFSR/01/0104-3004/2020
<b>Consultant</b>	Salah Al Kooheji Consulting Architects SPC
<b>Main Contractor</b>	Al Taitoon Contracting Co. WLL

### About Progress Report:

<b>Title of Document</b>	Progress Report of Somewhere Residences
<b>Reporting Period</b>	April 1, 2020 to April 30, 2020
<b>Date</b>	May 11, 2020



**BIN FAQEEH**  
REAL ESTATE INVESTMENT  
COMPANY S.P.A.



DESCRIPTION	PERCENTAGE (%) OF COMPLETION	REMARKS
<b>MOBILIZATION AND PRELIMINARIES</b>	50%	In Progress
<b>PILING WORKS</b>	100%	Completed
<b>EXCAVATION AND FILLING</b>	100%	Completed
<b>SUB STRUCTURE WORKS</b>	100%	Completed
<b>SUPER STRUCTURE</b>		
1. Ground Floor		
a. Columns and Lift wall	100%	Completed
2. First Floor		
a. First Floor Slab	100%	Completed
b. Columns and Corewall	100%	Completed
3. Second Floor		
a. Second Floor Slab	100%	Completed
b. Columns and Corewall	100%	Completed
4. Third Floor		
a. Third Floor Slab	100%	Completed
b. Columns and Corewall	100%	Completed
5. Fourth Floor		
a. Fourth Floor Slab	100%	Completed
b. Columns and Corewall	100%	Completed
6. Fifth Floor		
a. Fifth Floor Slab	100%	Completed
b. Columns and Corewall	100%	Completed
7. Sixth Floor		
a. Sixth Floor Slab	100%	Completed
b. Columns and Corewall	100%	Completed
8. Seventh Floor		
a. Seventh Floor Slab	100%	Completed
b. Pool deck Slab	100%	Completed
c. Columns and Corewall	100%	Completed
9. Eight Floor		
a. Eight Floor Slab	100%	Completed
b. Columns and Corewall	10%	In Progress
<b>EXTERNAL BLOCK WORK</b>		
First Floor	60%	In Progress
Second Floor	80%	In Progress
Third Floor	80%	In Progress
Fourth Floor Slab	70%	In Progress
<b>INTERNAL BLOCK WORKS</b>		
First Floor	20%	In Progress
Second Floor	50%	In Progress
Third Floor	50%	In Progress
Fourth Floor	40%	In Progress

<b>SUB STATION WORK</b>		
Sub Station work	50%	In Progress
<b>ELECTRICAL, FIRE ALARM AND ELV WORKS</b>	15%	In Progress
<b>PLUMBING WORKS</b>	15%	In Progress
<b>FIRE FIGHTING WORKS</b>	10%	In Progress

On-site photos:

*Elevations*



*Front View*



*Left View*





**BIN FAQEEH**  
REAL ESTATE INVESTMENT  
COMPANY S.P.C.

# Somewhere

RESIDENCES

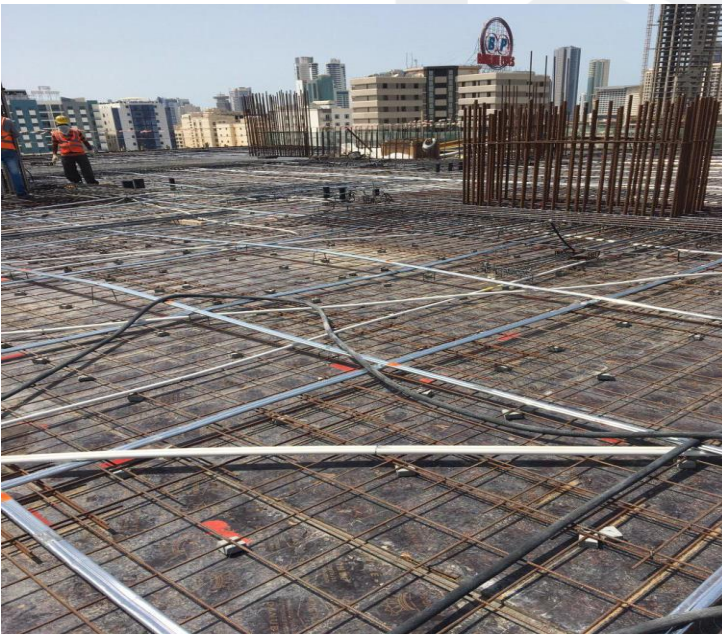
## Elevations



*Right View*



*Rear View*



*7<sup>th</sup> Floor – Slab Steel Work*





7<sup>th</sup> Floor – Slab Concrete Works



7<sup>th</sup> Floor – Column Steel Works



7<sup>th</sup> Floor – Swimming Pool Deck Steel Works



Pool Steel – Reinforcement Works



3<sup>rd</sup> Floor and 4<sup>th</sup> Floor – Block Works





*8<sup>th</sup> Floor – Slab Steel Works*



*8<sup>th</sup> Floor – Slab Concrete Works*



*Water Curing Slab*