

## WATERBAY TOWER C PROGRESS REPORT

### About the Project:

<b>Project Developer</b>	Bin Faqeeh Real Estate Investment Company S.P.C.
<b>Title of Project</b>	Waterbay Tower C
<b>Project Reference</b>	BFWBC/12/0105-3105/2020
<b>Design &amp; Supervision Consultant</b>	Arab Architects
<b>Interior Design Consultant</b>	(East) Dar Al Décor
<b>Main Contractor</b>	Al Jameel Construction S.P.C.

### About Progress Report:

<b>Title of Document</b>	Progress Report of Waterbay Tower C
<b>Reporting Period</b>	May 1, 2020 to May 31, 2020
<b>Authors &amp; project role</b>	Al Jameel Construction S.P.C.
<b>Date</b>	June 9, 2020

DESCRIPTION	PERCENTAGE (%) OF COMPLETION	REMARKS
<b>TOWER C (FRONT AND REAR PORTION)</b>		
<b>SUB STRUCTURE</b>	100%	Completed
<b>SUPER STRUCTURE</b>		
1. Structural 1 <sup>st</sup> Floor to Roof Floor	100%	Completed
2. Structural Roof Floor	100%	Completed
3. Block Works		
a. Basement 1, 2 and 3	100%	Completed
b. Ground Floor	95%	In Progress
c. 1 <sup>st</sup> Floor to 7 <sup>th</sup> Floor	100%	Completed
d. 8 <sup>th</sup> Floor to 9 <sup>th</sup> Floor	97%	In Progress
e. 10 <sup>th</sup> Floor	95%	In Progress
f. Roof Floor	95%	In Progress
4. Plastering Works		
a. Basement 1, 2 and 3	100%	Completed
b. Ground Floor	5%	In Progress
c. 1 <sup>st</sup> Floor to 4 <sup>th</sup> Floor	100%	Completed
d. 5 <sup>th</sup> Floor to 7 <sup>th</sup> Floor	98%	In Progress
e. 8 <sup>th</sup> Floor to 10 <sup>th</sup> Floor	90%	In Progress
5. Primer, Putty and 1 <sup>st</sup> Coat Paint (Ceiling)		
a. Basement 1, 2 and 3	100%	Completed
b. Ground Floor	5%	In Progress
c. 1 <sup>st</sup> Floor to 3 <sup>rd</sup> Floor	70%	In Progress
d. 4 <sup>th</sup> Floor	50%	In Progress
e. 5 <sup>th</sup> Floor	25%	In Progress
f. 6 <sup>th</sup> Floor to 7 <sup>th</sup> Floor	20%	In Progress
6. Primer, Putty and 1 <sup>st</sup> Coat Paint (Wall)		
a. Basement - 1, 2 and 3	60%	In Progress
b. Ground Floor	5%	In Progress
c. 1 <sup>st</sup> Floor to 3 <sup>rd</sup> Floor	70%	In Progress
d. 4 <sup>th</sup> Floor	45%	In Progress
e. 5 <sup>th</sup> Floor	48%	In Progress
f. 6 <sup>th</sup> Floor to 10 <sup>th</sup> Floor	40%	In Progress
7. MEP Services for Walls		
a. Basement - 3	50%	In Progress
b. Basement - 2	51%	In Progress
c. Basement - 1	55%	In Progress
d. Ground Floor	22%	In Progress
e. 1 <sup>st</sup> Floor	75%	In Progress
f. 2 <sup>nd</sup> Floor to 3 <sup>rd</sup> Floor	74%	In Progress
g. 4 <sup>th</sup> Floor	73%	In Progress
h. 5 <sup>th</sup> Floor to 6 <sup>th</sup> Floor	72%	In Progress
i. 7 <sup>th</sup> Floor	62%	In Progress
j. 8 <sup>th</sup> Floor	54%	In Progress

a. 9 <sup>th</sup> Floor to 10 <sup>th</sup> Floor	50%	In Progress
b. Roof Floor	21%	In Progress
<b>8. MEP Services for Ceiling</b>		
a. Basement – 3	50%	In Progress
b. Basement – 2	51%	In Progress
c. Basement – 1	55%	In Progress
d. Ground Floor	22%	In Progress
e. 1 <sup>st</sup> Floor	75%	In Progress
f. 2 <sup>nd</sup> Floor to 3 <sup>rd</sup> Floor	74%	In Progress
g. 4 <sup>th</sup> Floor to 5 <sup>th</sup> Floor	72%	In Progress
h. 6 <sup>th</sup> Floor	69%	In Progress
i. 7 <sup>th</sup> Floor	57%	In Progress
j. 8 <sup>th</sup> Floor	54%	In Progress
k. 9 <sup>th</sup> Floor to 10 <sup>th</sup> Floor	50%	In Progress
l. Roof Floor	21%	In Progress

*On-site Photos:*



*Gypsum Ceiling and Painting Works at Typical Floors*



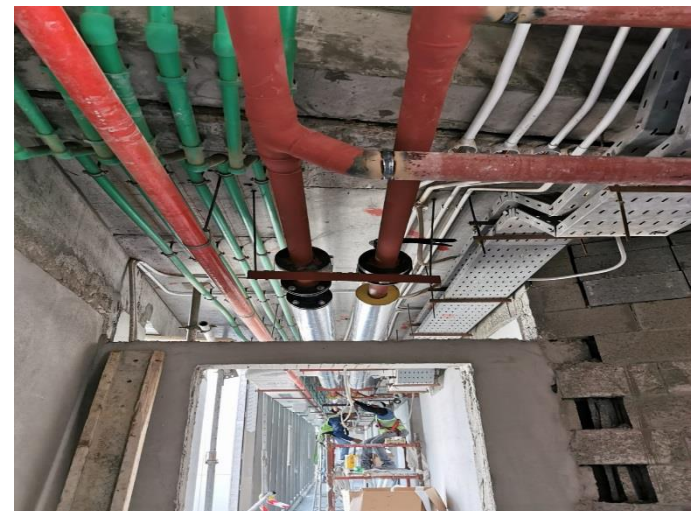
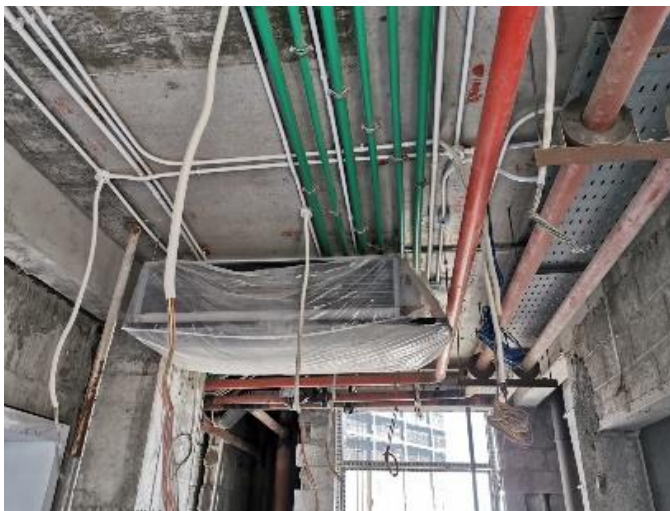
*Painting Works at Typical Floor*



*Marble Works at Typical Floors*



*Tile Works for Toilet at Typical Floors*



*Installation of MEP Services at Typical Floors*