

WATERBAY TOWER C PROGRESS REPORT

About the Project:

Project Developer	Bin Faqeeh Real Estate Investment Company W.L.L.
Title of Project	Waterbay Tower C
Project Reference	BFWBC/39/0108-3108/2022
Design & Supervision Consultant	Arab Architects
Interior Design Consultant	(East) Dar Al Décor
Main Contractor	Al Jameel Construction S.P.C.

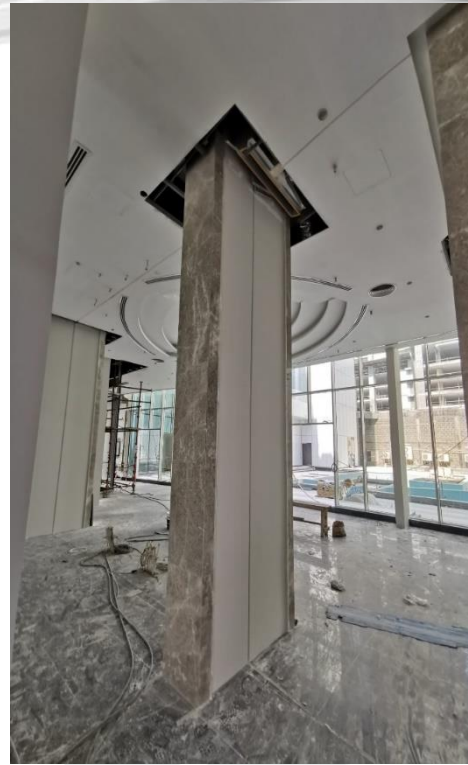
About Progress Report:

Title of Document	Progress Report of Waterbay Tower C
Reporting Period	August 1, 2022 to August 31, 2022
Authors & project role	Al Jameel Construction S.P.C.
Date	September 6, 2022

DESCRIPTION	PERCENTAGE (%) OF COMPLETION	REMARKS
TOWER C (FRONT AND REAR PORTION)		
SUB STRUCTURE	100%	Completed
SUPER STRUCTURE		
1. Structural 1 st Floor to Roof Floor	100%	Completed
2. Structural Roof Floor	100%	Completed
3. Block Works Basement to Roof Floor	100%	Completed
4. Plastering Works Basement to Roof Floor	100%	Completed
5. Primer, Putty and 1 st Coat Paint (Ceiling)		
a. Basement 1, 2 and 3	100%	Completed
b. Ground Floor	95%	In Progress
c. 1 st Floor to 6 th Floor	95%	In Progress
d. 7 th Floor to 8 th Floor	95%	In Progress
e. 9 th Floor	95%	In Progress
f. 10 th Floor	80%	In Progress
6. Primer, Putty and 1 st Coat Paint (Wall)		
a. Basement – 3	100%	Completed
b. Basement – 2	90%	In Progress
c. Basement – 1	75%	In Progress
d. Ground Floor	80%	In Progress
e. 1 st Floor to 9 th Floor	95%	In Progress
f. 10 th Floor	80%	In Progress
7. 1 st Coat, 2 nd Coat Waterproofing & Water leakage Test – Inside Flats		
a. 1 st Floor to 7 th Floor	100%	Completed
b. 8 th Floor	98%	In Progress
c. 9 th Floor to 10 th Floor	100%	Completed
8. 1 st Coat, 2 nd Coat Waterproofing & Water leakage Test – Balcony Area		
a. 1 st Floor to 10 th Floor	100%	Completed
9. MEP Services for Walls		
a. Basement – 1, 2 and 3	95%	In Progress
b. Ground Floor	100%	Completed
c. 1 st Floor to 10 th Floor	100%	Completed
d. Roof Floor	80%	In Progress
10. MEP Services for Ceiling		
a. Basement – 1, 2 and 3	95%	In Progress
b. Ground Floor	100%	Completed
c. 1 st Floor to 6 th Floor	100%	Completed
d. 7 th Floor	95%	In Progress
e. 8 th Floor to 10 th Floor	100%	Completed
f. Roof Floor	70%	In Progress



Application of Paint for Walls & Ceiling at Typical Floors



Fixing of Marble & Tiles in Corridor Area and Fixing of Marble Wall Cladding at GF Reception Area



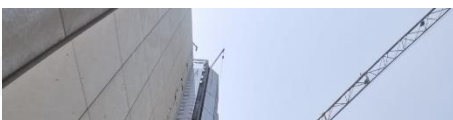
Fixing of Marble Wall Cladding works at Ground floor Reception Area



Fixing of Doors and Painting Works at Typical Floors



Painting Works for Staircase at Typical Floors



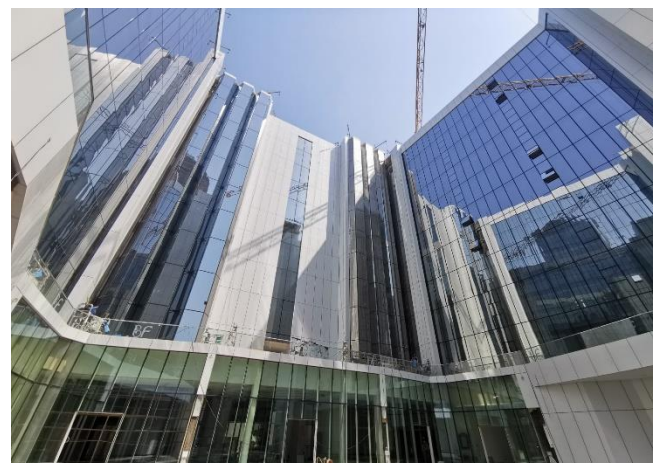
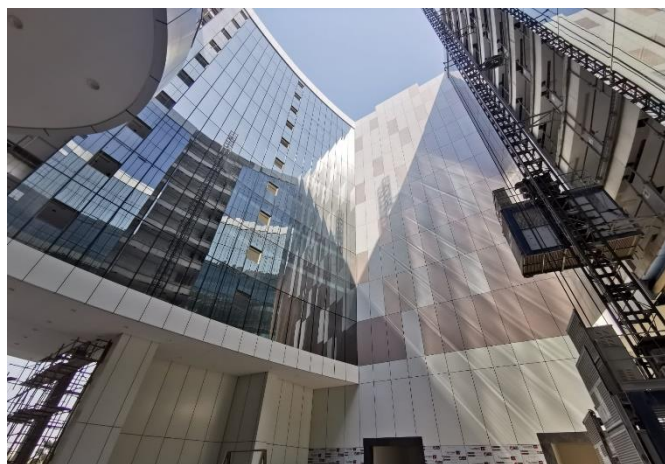
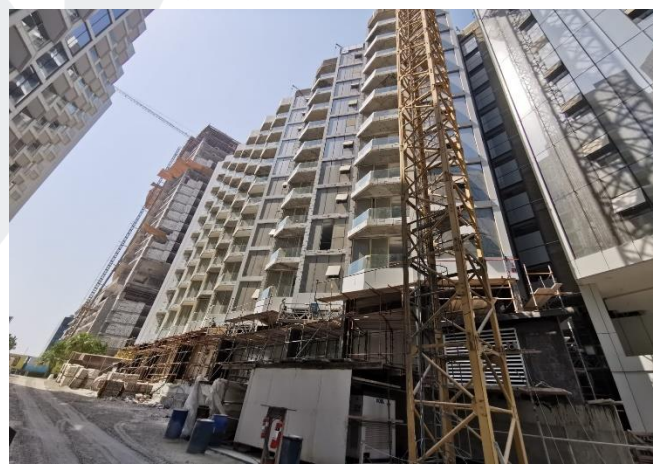
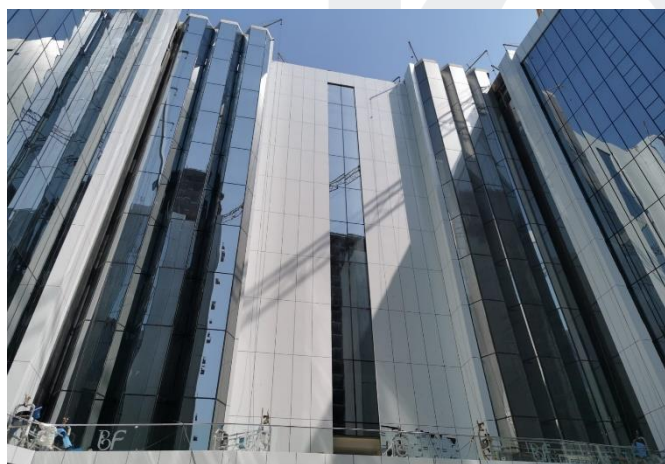
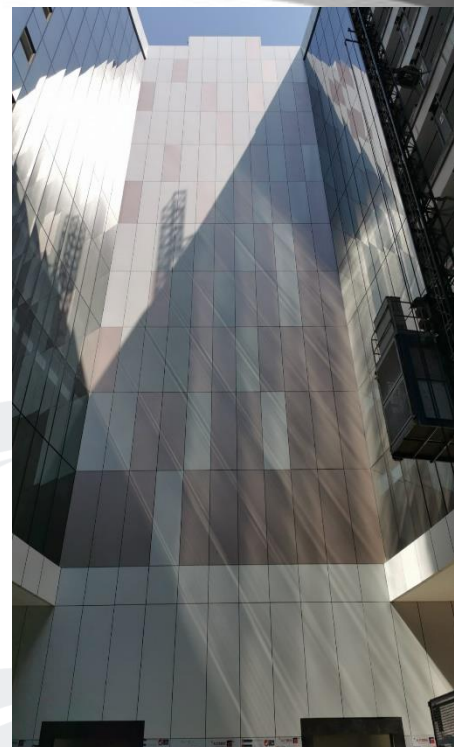
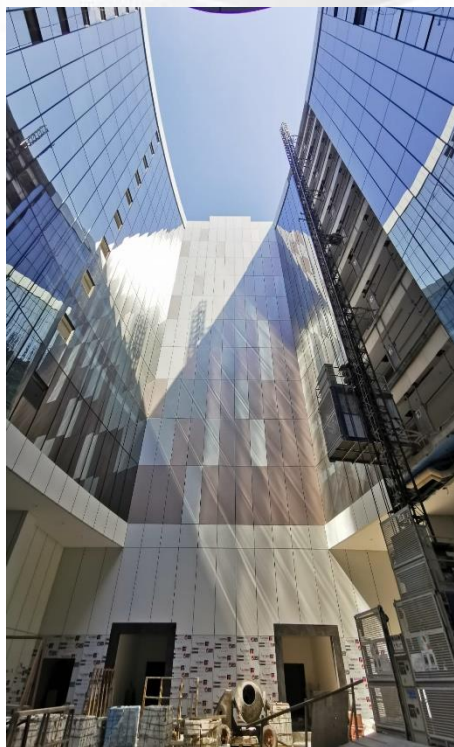


BIN FAQEEH

REAL ESTATE INVESTMENT
COMPANY S.R.L.



WATERBAY RESIDENCE
by-roberto.cavalli



Fixing of Aluminum Cladding at Ground Floor to Roof Floor