

## WATERBAY TOWER C PROGRESS REPORT

### About the Project:

<b>Project Developer</b>	Bin Fageeh Real Estate Investment Company S.P.C.
<b>Title of Project</b>	Waterbay Tower C
<b>Project Reference</b>	BFWBC/08/0101-3101/2020
<b>Design &amp; Supervision Consultant</b>	Arab Architects
<b>Interior Design Consultant</b>	(East) Dar Al Décor
<b>Main Contractor</b>	Al Jameel Construction S.P.C.

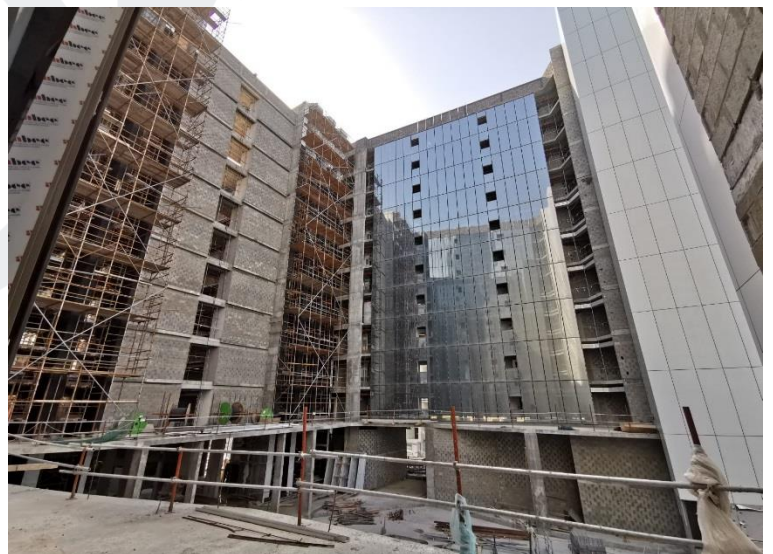
### About Progress Report:

<b>Title of Document</b>	Progress Report of Waterbay Tower C
<b>Reporting Period</b>	January 1, 2020 to January 31, 2020
<b>Authors &amp; project role</b>	Al Jameel Construction S.P.C.
<b>Date</b>	February 09, 2020

DESCRIPTION	PERCENTAGE (%) OF COMPLETION	REMARKS
<b>TOWER C (FRONT AND REAR PORTION)</b>		
<b>SUB STRUCTURE</b>	100%	Completed
<b>SUPER STRUCTURE</b>	100%	Completed
1. Structural 1 <sup>st</sup> Floor to 10 <sup>th</sup> Floor	100%	Completed
2. Structural Roof Floor	100%	Completed
3. Block Works		
a. Basement 1, 2 and 3	100%	Completed
b. Ground Floor	85%	In Progress
c. 1 <sup>st</sup> Floor to 7 <sup>th</sup> Floor	100%	Completed
d. 8 <sup>th</sup> Floor to 9 <sup>th</sup> Floor	97%	In Progress
e. 10 <sup>th</sup> Floor	95%	In Progress
f. Roof Floor	95%	In Progress
4. Plastering Works		
a. Basement 1, 2 and 3	100%	Completed
b. Ground Floor	5%	In Progress
c. 1 <sup>st</sup> Floor to 9 <sup>th</sup> Floor	90%	In Progress
d. 10 <sup>th</sup> Floor	90%	In Progress
5. Primer, Putty and 1 <sup>st</sup> Coat Paint (Ceiling)		
a. Basement 1, 2 and 3	100%	Completed
b. Ground Floor	5%	In Progress
c. 1 <sup>st</sup> Floor	10%	In Progress
d. 2 <sup>nd</sup> Floor	15%	In Progress
e. 3 <sup>rd</sup> Floor	10%	In Progress
f. 4 <sup>th</sup> Floor to 5 <sup>th</sup> Floor	0%	In Progress
6. Primer, Putty and 1 <sup>st</sup> Coat Paint (Wall)		
a. Basement - 1, 2 and 3	60%	In Progress
b. Ground Floor	5%	In Progress
c. 1 <sup>st</sup> Floor to 4 <sup>th</sup> Floor	45%	In Progress
d. 5 <sup>th</sup> Floor	48%	In Progress
e. 6 <sup>th</sup> Floor to 10 <sup>th</sup> Floor	40%	In Progress
7. MEP Services for Walls		
a. Basement - 3	50%	In Progress
b. Basement - 2	51%	In Progress
c. Basement - 1	55%	In Progress
d. Ground Floor	19%	In Progress
e. 1 <sup>st</sup> Floor to 2 <sup>nd</sup> Floor	67%	In Progress
f. 3 <sup>rd</sup> Floor to 5 <sup>th</sup> Floor	63%	In Progress
g. 6 <sup>th</sup> Floor	59%	In Progress
h. 7 <sup>th</sup> Floor	57%	In Progress
i. 8 <sup>th</sup> Floor	54%	In Progress
j. 9 <sup>th</sup> Floor	50%	In Progress
k. 10 <sup>th</sup> Floor	48%	In Progress
l. Roof Floor	20%	In Progress

8. MEP Services for Ceiling		
a. Basement - 3	50%	In Progress
b. Basement - 2	51%	In Progress
c. Basement - 1	55%	In Progress
d. Ground Floor	19%	In Progress
e. 1 <sup>st</sup> Floor to 2 <sup>nd</sup> Floor	67%	In Progress
f. 3 <sup>rd</sup> Floor to 5 <sup>th</sup> Floor	63%	In Progress
g. 6 <sup>th</sup> Floor	59%	In Progress
h. 7 <sup>th</sup> Floor	57%	In Progress
i. 8 <sup>th</sup> Floor	54%	In Progress
j. 9 <sup>th</sup> Floor	50%	In Progress
k. 10 <sup>th</sup> Floor	48%	In Progress
l. Roof Floor	20%	In Progress

*On-site Photos:*



*Installation of Aluminum Work (Brackets, Mullion, Rockwool, ACP Cladding and Glass and Application of Bitumin Paint)*





*Gypsum Ceiling Works at Typical floor*



*Lift Works at Typical Floor*



*Tile Works for Toilet at Typical Floor*



*Installation of MEP Services at Typical Floor*

